

# YN PIPE COUPLING FLAME RESISTANT COUPLING

RECINTO INTERIOR ZONA FRANCA DE CADIZ  
EDIFICIO HERACLES C/ANDORRA NAVE 16L  
11011 CADIZ  
TELEFONOS: +34 956 277 129 / +34 630 364 692  
contacto@multiexpansion.es  
www.multiexpansion.com



Test Details : A fire resistance test was conducted for 30 minutes at 800°C. (Pressure of 18kgf/cm<sup>2</sup> maintained)  
Test Regulations : ISO 19921, ISO 19922



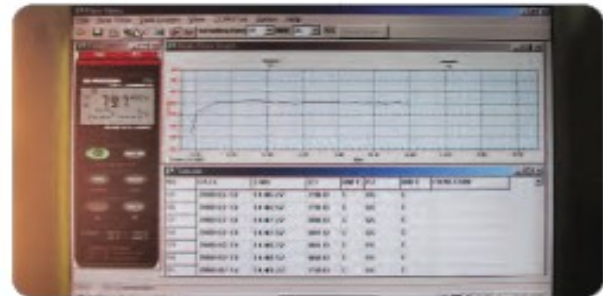
▲ The product just before the fire test, after being installed in a furnace



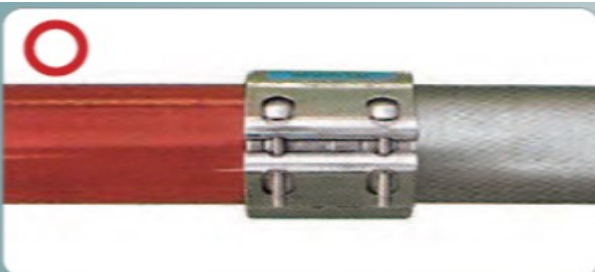
▲ The product during the fire test according to ISO 19922 regulation



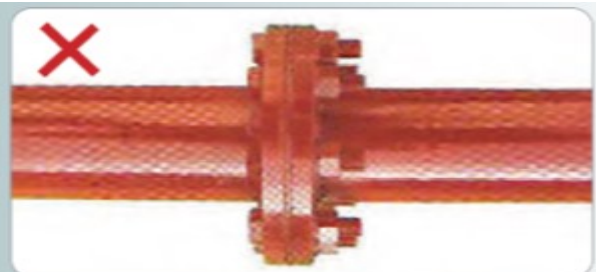
▲ The product after completion of the test with normal pressure being maintained at over 800°C



▲ The product with flame temperature being maintained at over 800°C



▲MULTI-FLEX COUPLING



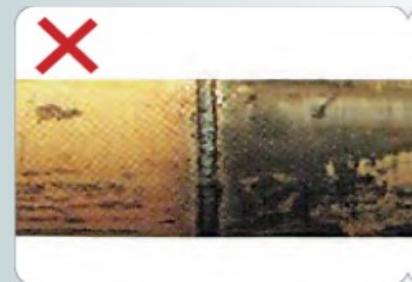
▲FLANGE



▲UNION



▲SOCKET



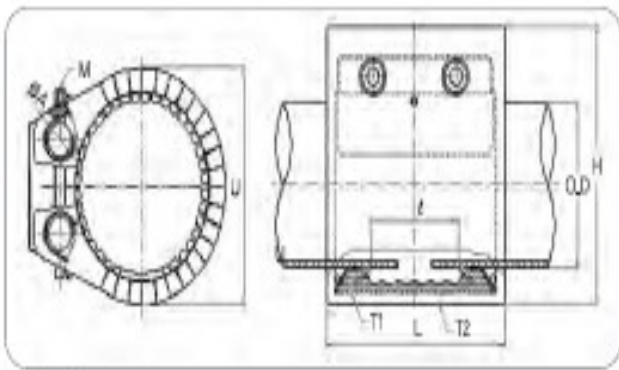
▲WELDING

# YN PIPE COUPLING FLAME RESISTANT COUPLING

RECINTO INTERIOR ZONA FRANCA DE CADIZ  
EDIFICIO HERACLES C/ANDORRA NAVE 16L  
11011 CADIZ  
TELEFONOS: +34 956 277 129 / +34 630 364 692  
contacto@multiexpansion.es  
www.multiexpansion.com



Test Details : A fire resistance test was conducted for 30 minutes at 800°C. (Pressure of 18kgf/cm<sup>2</sup> maintained)  
Test Regulations : ISO 19921, ISO 19922



▲ The product with absolutely no internal structure problems after the test.

## FPC-GR-S

N.D	D <sub>1</sub> (O.D)	D <sub>2</sub> (RANGE)	M	L	ε	U	H	W.P	W/T	P
20A	26.7 27.2	± 0.5	M6 X 40L X 2BOLTS	68	20	52	63	20	0,32	3°8
25A	33.4 34.0	± 0.6	M6 X 40L X 2BOLTS	68	20	59	70	20	0,35	3°8
32A	42.2 42.7	± 0.6	M8 X 45L X 2BOLTS	68	20	68	81	20	0,45	10°15
40A	48.3 48.6	± 1.0	M8 X 45L X 2BOLTS	68	22	73	87	20	0,5	10°15
50A	60.3 60.5	± 1.0	M10 X 65L X 2BOLTS	94	32	92	109	18	1,0	15°20
65A	73.0 76.3	± 1.0	M10 X 65L X 2BOLTS	94	30	108	124	18	1,2	15°20
80A	88.9 89.1	± 1.5	M12 X 75L X 2BOLTS	122	50	130	144	16	2,1	40°30
100A	114,3	± 1.5	M12 X 75L X 2BOLTS	122	50	155	171	16	2,4	40°30
125A	139.8 141.3	± 1.5	M14 X 90L X 2BOLTS	138	55	182	203	14	3,8	90°100
150A	165.2 168.3	± 1.5	M14 X 90L X 2BOLTS	138	55	207	229	14	4,2	90°100
200A	216.3 219.1	± 2.0	M16 X 130L X 2BOLTS	176	72	265	297	12	11,2	120°150
250A	267.4 273.1	± 2.0	M16 X 130L X 2BOLTS	176	63	316	348	10	12,9	120°150
300A	318.5 323.9	± 2.0	M18 X 120L X 2BOLTS	176	70	367	400	7	14,9	170°190
350A	355,6	± 2.0	M18 X 130L X 2BOLTS	176	68	404	439	7	16,1	170°190

ND: Nominal Diameter (A)

ε: Allowable Shrinkage/Expansion Clearance (m/m)

D1: Actual Outer Diameter of Pipe (m/m)

D2: Min./Max. Allowable Limit for Pipe (m/m)

U: Outer Diameter of Coupling (m/m)

M: Fastener Bolt Size/Length (m/m)

W.P: Working Pressure (kgf · cm<sup>2</sup>)

W/T: Weight Per Unit (kg)

L: Coupling Width (m/m)

P: Optimum Locking Torque Value Nm (kgf · cm)