

INFORMATION SIGNS

Safety Signs Scording to the ICAO and IMO Document 9636

(mm)
150x150
200x200
300x300
400x400



The ICAO and IMO joint publication Document 9636 specifies the signs to provide guidance information to persons at airports and marine terminals. The "First Aid", "No Smoking", "No Entry/No trespassing" and "Carry no weapons on board" signs should be designed according to the colours specified in Section II of this publication whilst the colours of general information signs can be decided by national or local authorities keeping in mind that readability is of the foremost importance.



S 42 01



S 42 02



S 42 03



S 42 04

(mm)
150x150
200x200
300x300
400x400



S 42 51



S 42 52



S 42 53



S 42 54



S 42 55



S 42 56



S 42 57



S 42 58



S 42 59



S 42 60



S 42 61



S 42 62



S 42 63



S 42 64



S 42 65



S 42 66



S 42 67



S 42 68



S 42 69



S 42 70



S 42 71



S 42 72



S 42 73



S 42 74



S 42 75



S 42 76



S 42 77



S 42 78



S 42 79



S 42 80



S 42 81



S 42 82



S 42 83



S 42 84



S 42 85



S 42 86



S 42 87



S 42 88



S 42 89

Security Level Signs

The  Everlux® Security Level signs are available in a photoluminescent magnetic finish. This is the ideal solution to secure adhesion to all suitable metallic surfaces. The magnetic finish also allows for the quick and easy change of security level indicator. The selling unit of this product is comprised of 4 components.



[mm]
200x180



S 42 10



S 42 11

S 42 12

S 42 13



[mm]
200x100

Crew Only Access



S 42 20



[mm]
300x200

Ultra-Destructible Seals



S 42 25



[mm]
150x30
300x30



S 42 26



S 42 27


Only available in non-photoluminescent ultra-destructible self-adhesive vinyl. Detailed technical sheet available on request.

◎ ISPS CODE SIGNS

ISPS Compliant Notices

[mm]
900x450





THIS SHIP COMPLIES WITH THE
I.M.O. ISPS CODE

STRICT SECURITY MEASURES & PROCEDURES ARE ENFORCED
NO OFFENSIVE WEAPONS ALLOWED

VISITORS WILL BE MET ON DECK AND MUST REGISTER ONBOARD WITH
A PHOTOGRAPHIC IDENTIFICATION DOCUMENT AND MAY BE SUBJECT
TO PERSONAL OR BAGGAGE SEARCHES

YOUR CO-OPERATION IS EXPECTED IN COMPLIANCE WITH MARITIME
SECURITY REQUIREMENTS

THE MASTER

S 42 30

[mm]
300x200



RESTRICTED AREA

AUTHORIZED

PERSONNEL ONLY

UNAUTHORIZED PRESENCE WITHIN THIS AREA
CONSTITUTES A BREACH OF SECURITY

S 42 31

CCTV Signs

[mm]
150x150[*]
200x300[**]



[*] [**] Only available in this size



**This vessel
is under**

CCTV

Surveillance

[**] S 42 40



CCTV

In operation

[*] S 42 41



VDR

**Voice recording is
fitted on this bridge**

[*] S 42 42

[mm]
300x100





**This area is
under CCTV
surveillance**

S 42 43

Safety Procedures

[mm]
150x200
200x300
300x400



Safety procedures

-  Avoid contact.
-  Avoid touching your face.
-  Wear a mask.
-  Wear gloves.
-  Practise Shipboard Self-Distancing (SSD).

According to IMO Circular Letter No.4284 and the ICS Guidance for Ship Operators for the Protection of the Health of Seafarers

SC 001



Safety procedures

-  Wash or disinfect your hands regularly.
-  Practise Shipboard Self-Distancing (SSD)
-  Cough or sneeze into your elbow or tissue.
-  Avoid contact.
-  Avoid touching your face.
-  Stay in your cabin if you are unwell. Inform the Master. Do NOT go ashore.

According to IMO Circular Letter No.4284 and the ICS Guidance for Ship Operators for the Protection of the Health of Seafarers

SC 002



Hand and respiratory hygiene precautions

-  Passengers and crew must wash hands frequently using soap and hot water or alcohol-based (at least 65-75%). Rub hands thoroughly for at least 20 seconds.
-  Avoid touching your face, including mouth, nose and eyes with unwashed hands.
-  Cover nose and mouth with a disposable tissue when sneezing, coughing, wiping and blowing the nose. Immediately dispose of the used tissue.
-  If you don't have a tissue, cover nose and mouth and cough or sneeze into a flexed elbow.
-  Keep at least 1 metre (3 feet) distance from other people.

According to IMO Circular Letter No.4284 and the ICS Guidance for Ship Operators for the Protection of the Health of Seafarers

SC 003



COVID-19
Protect yourself and others from getting sick

-  When coughing and sneezing, cover your nose and mouth with a tissue or a flexed elbow.
-  Throw the tissue into a closed bin immediately after use.
-  Clean your hands with an alcohol-based hand rub or with soap and hot water for at least 20 seconds:
 - After coughing or sneezing
 - When caring for the sick
 - Before, during and after preparing food
 - Before eating
 - After toilet use
 - When hands are visibly dirty.
-  Avoid touching eyes, nose and mouth.

According to IMO Circular Letter No.4284 and the ICS Guidance for Ship Operators for the Protection of the Health of Seafarers

SC 004



Safety procedures for ship and shore-based personnel interface

If attendance onboard a ship is unavoidable:

-  Minimize the number of persons attending.
-  Use outer walkway, avoid access through the crew accommodation.
-  Reduce time inside crew accommodation to the absolute minimum necessary to perform duties onboard.
-  Do not shake hands, fist a wave, a nod or a bow.
-  Frequently clean your hands with soap and hot water for at least 20 seconds or use an alcohol-based hand rub.
-  Maintain social distancing.
-  Avoid touching eyes, nose and mouth.
-  Make sure your face mask covers your mouth and nose.
-  Do not touch the face mask once it is on.
-  Immediately safety discard single-use masks after each use.
-  Clean your hands after removing masks.

According to IMO Circular Letter No.4284 and the ICS Guidance for Ship Operators for the Protection of the Health of Seafarers

SC 005



Stay healthy while travelling

Avoid these modes of travel if you have a fever or a cough.

-  Eat only well-cooked food.
-  Avoid smoking or public.
-  Avoid close contact and travel with sick persons, particularly in well-ventilated.
-  Avoid touching eyes, nose and mouth.
-  Frequently clean your hands with an alcohol-based hand rub or with soap and hot water for at least 20 seconds.
-  Avoid close contact with people suffering from a fever or a cough.
-  When coughing and sneezing, cover your mouth and nose with a tissue or flexed elbow. Throw the tissue into a closed bin immediately after use and clean your hands.
-  If wearing a face mask, be sure it covers your mouth and nose and do not touch it once on. Immediately discard single-use masks after each use and clean your hands after removing masks.
-  If you become sick while travelling, tell crew or ground staff.
-  Seek medical care early if you become sick and share your history with your health provider.

According to IMO Circular Letter No.4284 and the ICS Guidance for Ship Operators for the Protection of the Health of Seafarers

SC 006



How to Handwash?
Clean hands protect against infection

Duration of the entire procedure: 40-60 seconds

1. Wet hands with water.
2. Apply enough soap to lather.
3. Rub hands palm to palm.
4. Rub palm against the back of the other hand.
5. Rub the back of one hand against the palm of the other.
6. Rub the palm of one hand against the back of the other.
7. Rub the fingers against the palm of the other hand.
8. Rub the thumb against the palm of the other hand.
9. Rub the thumb in a circular motion.
10. Rub the back of one hand against the other hand.
11. Rub the thumb on the side.

According to IMO Circular Letter No.4284 and the ICS Guidance for Ship Operators for the Protection of the Health of Seafarers

SC 007



Hand sanitization

Begin by removing all rings, bracelets and watches

1. Apply distribution of soap gel over all areas of the hands and the shape of a hand to create the thick lather.
2. Rub your palm together.
3. Rub web fingers interlaced.
4. Rub the back of your hand against your palm.
5. Rub your hand using your other hand. Repeat with the other hand.
6. Rub the tips of your fingers against the palm of your other hand in a circular motion.
7. Rub each thumb with the opposite hand.
8. Rub the side of your hand against the other 4.

According to IMO Circular Letter No.4284 and the ICS Guidance for Ship Operators for the Protection of the Health of Seafarers

SC 008



How to use the hygiene mask

-  Wash your hands well before putting on the mask.
-  Cover your mouth, nose and chin completely.
-  Replace the mask as soon as it is wet and dispose in the nearest rubbish bin.
-  Wash your hands well after discarding the mask.

According to IMO Circular Letter No.4284 and the ICS Guidance for Ship Operators for the Protection of the Health of Seafarers

SC 009



Safety procedures

-  Maintain social distancing.
-  Form a single line/queue.
-  Keep right.
-  When coughing or sneezing cover your mouth and nose with your elbow.

According to IMO Circular Letter No.4284 and the ICS Guidance for Ship Operators for the Protection of the Health of Seafarers

SC 010

INFECTION PREVENTION AND CONTROL SAFETY SIGNS

Safety Procedures

(mm)
150x200
200x300
300x400



SC 011



SC 012



SC 013

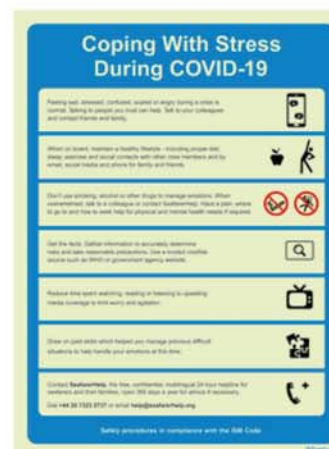
(mm)
300x400
400x600



SC 018



SC 019



SC 020



SC 021



SC 022

Emergency

(mm)
150x150
200x200
300x300
150x200[*]
200x300[*]
300x400[*]



SC 031



SC 032



[*] SC 041



[*] SC 042

Mandatory



 **Mandatory to keep to the left** SC 071
 **Mandatory to keep to the right** SC 072
 **Mandatory requirement to form a single row/queue** SC 073
 **Mandatory to maintain social distancing** SC 074
 **Maintain a minimum distance of 2 metres between individuals** SC 075
 **Mandatory to wear a protective gown** SC 076
 **Mandatory to wear a protective cap** SC 077
 **Mandatory to use a protective visor** SC 078
 **Mandatory to wear protective footwear covers** SC 079
 **Mandatory to wear protective footwear covers** SC 080
 **Mandatory to wear safety goggles** SC 081
 **Mandatory to wear a hooded protective suit** SC 082
 **Mandatory to wear a protective suit** SC 083
 **Mandatory to wear protective gloves** SC 084
 **Mandatory to wear a protective mask** SC 085
 **Mandatory to use pedal to open** SC 086
 **Mandatory hand washing protocols** SC 087
 **Wash your hands regularly** SC 088
 **Mandatory to disinfect your hands** SC 089
 **Mandatory to disinfect your hands before entering** SC 090
 **Mandatory body temperature measurement** SC 091
 **Mandatory body temperature measurement** SC 092
 **Discard used masks and gloves here** SC 093

[mm]
150x200
200x300
300x400

Warning



 **Warning risk of infection** SC 051
 **Warning Isolation ward** SC 052
 **Warning Isolation cabin** SC 053
 **Warning Quarantine quarters** SC 054
 **Warning Quarantine zone** SC 055

[mm]
150x200
200x300
300x400

Service



Priority service

 (*) SC 131
Priority service

Priority service for those over 70 years old, citizens considered to be at risk, health professionals & key workers
 (*) SC 132
Maximum number of people allowed inside

 SC 121

[mm]
300x200
400x300
[*]300x100
[*]400x150
[*]600x200
[*]800x300

INFECTION PREVENTION AND CONTROL SAFETY SIGNS

Prohibition

(mm)
150x200
200x300
300x400



Composite

(mm)
300x300



(mm)
600x200
900x300
300x200[*]
400x300[*]



(mm)
400x300
600x400
800x600
600x600[*]
800x800[*]



Self-adhesive Photoluminescent Vinyl Discs

(mm)
Diam. 80
Diam. 130[*]

[*] Supplied by the unit.



Self-adhesive discs supplied in sheet of 6 or 12 units.

Diam. 80mm



Service



SC 191



SC 192



[mm]
800x300

Safety Distance



SC 201



SC 202



SC 203



SC 204



[mm]
200x200
400x400
600x600



SC 211



[mm]
900x200



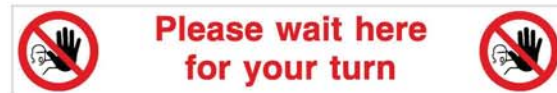
SC 221



[mm]
900x150



SC 223



SC 222



SC 225



SC 224

Self-adhesive Discs for Floor Application



Self-adhesive discs
supplied in sheet of
6 or 12 units.

Diam.80mm



SC 231



SC 232



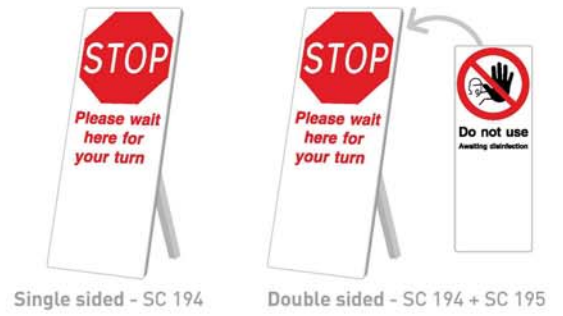
SC 233



[mm]
Diam. 80

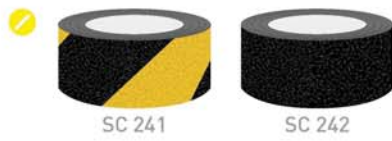
Portable Signs

[mm]
800x300



Non-slip Rolls for Floor Application

[mm]
18000x25
18000x50



Marking Rolls for Floor Application

[mm]
33000x50

